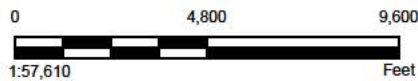




Source: Esri, DigitalGlobe, GeoEye, Earthstar Geographics, CNES/Airbus DS, USDA, USGS, AEX, Geomapping, AeroGRID, IGN, IGP, swisstopo, and the GIS User Community

LEGEND

-  FPL Owned Property
-  Linear Facility Corridor
-  Transmission Interconnection Corridor
-  Certified Site Boundary
-  County Boundary



REFERENCE(S)
PROPERTY, L NEAR FACILITY CORR DOR, CERTIFIED BOUNDARY, FPL & GOLDER ASSOCIATES
NC., 2015

CLIENT
FPL

PROJECT
OKEECHOBEE CLEAN ENERGY CENTER

TITLE
**GENERAL LOCATION
MAP**

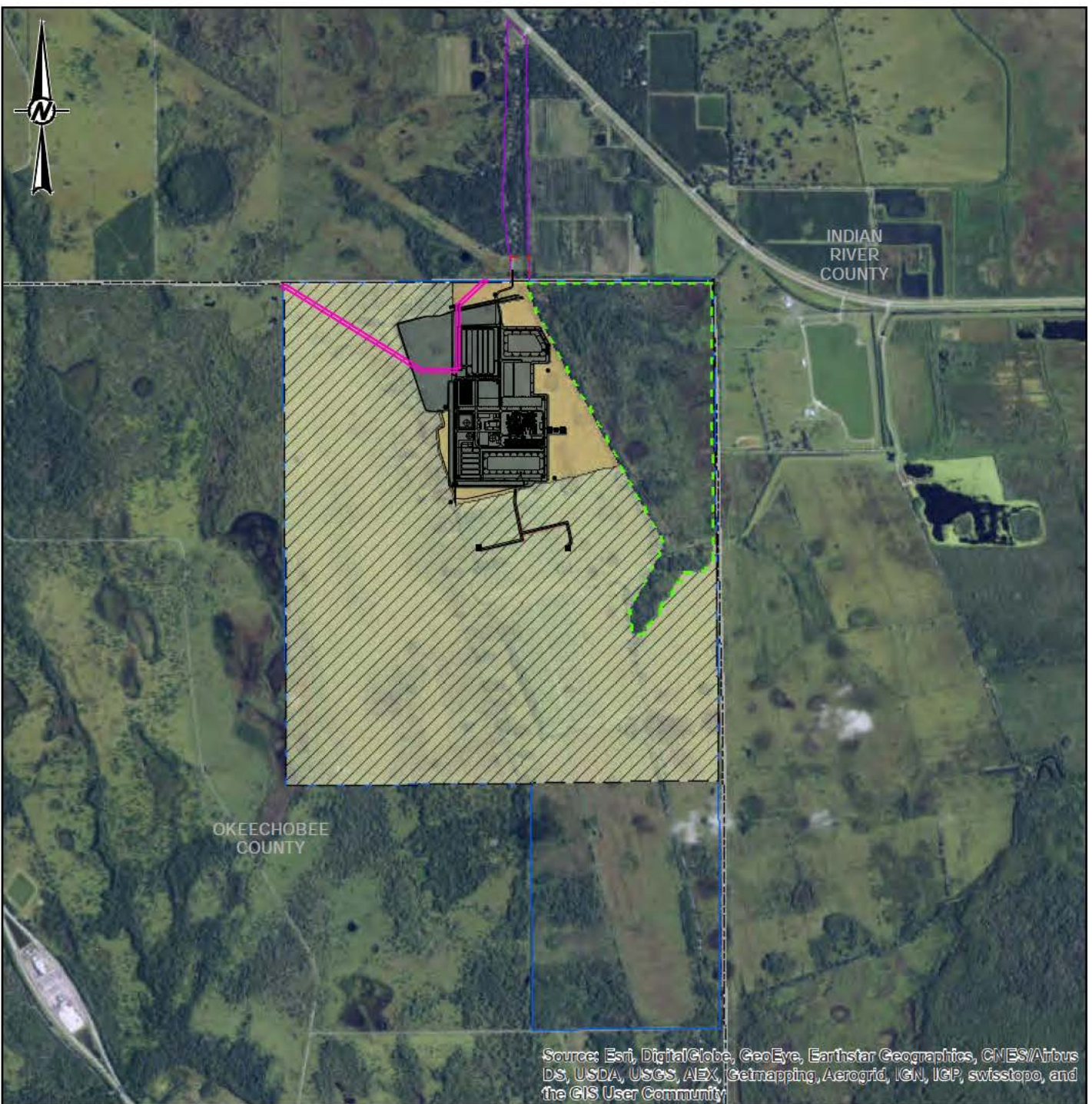


YYYY-MM-DD	2015-09-07
DESIGNED	NRL
PREPARED	NRL
REV EWED	KAB
APPROVED	KFK

PROJECT NO. 1414979	CONTROL B064	REV. 0	FIGURE 1
------------------------	-----------------	-----------	--------------------

G:\PROJECTS\FPL\Okeechobee\9 PROJECTS\1414979\B_SCA_Project\02_PROD\COM\K011414979_B023_General_Location.mxd

IF THIS MEASUREMENT DOES NOT MATCH WHAT IS SHOWN, THE SHEET SIZE HAS BEEN MODIFIED FROM ANSIA 25mm



LEGEND

- OCEC Unit 1
- Open Space
- UFA Well Delivery Pipeline
- Mitigation Area
- Certified Site Boundary
- FPL Owned Property
- Linear Facility Corridor
- Transmission Interconnection Corridor
- On-Site Gas Pipeline Alternatives
- Future Solar Area



REFERENCE(S)
 PROPERTY, LINEAR FACILITY CORRIDOR, CERTIFIED BOUNDARY, FUTURE SOLAR AREA, OPEN SPACE, MITIGATION AREA, FPL & GOLDER ASSOCIATES INC., 2015
 FACILITY LAYOUT, BLACK & VEATCH, 2015

CLIENT
FPL

PROJECT
OKEECHOBEE CLEAN ENERGY CENTER

TITLE
SITE PLAN

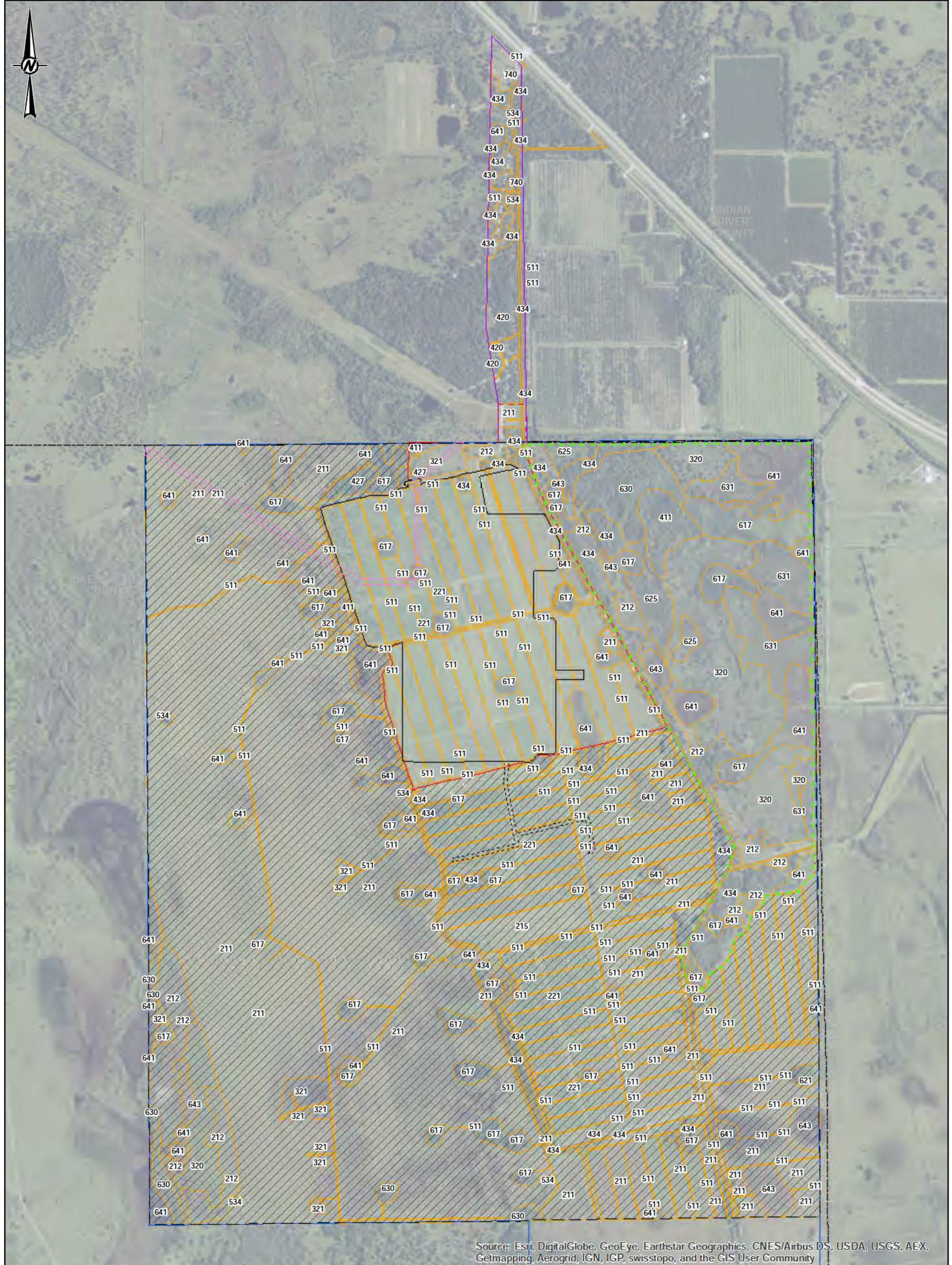


YYYY-MM-DD	2015-09-17
DESIGNED	NRL
PREPARED	NRL
REVIEWED	KAB
APPROVED	KFK

PROJECT NO. 1414979	CONTROL B026	REV. 0	FIGURE 2
------------------------	-----------------	-----------	-------------

G:\PROJ\ECTS\FLO\enrich\enrich_09_PROJECT\1414979\B_SCA_Project02_PRODUC\10\MMX2011414979_B026_SitePlan.mxd

IF THIS MEASUREMENT DOES NOT MATCH WHAT IS SHOWN, THE SHEET SIZE HAS BEEN MODIFIED FROM: ANSI A 24mm



Source: Esri, DigitalGlobe, GeoEye, Earthstar Geographics, CNES/Airbus DS, USDA, USGS, AEX, Getmapping, Aerogrid, IGN, IGP, swisstopo, and the GIS User Community

- LEGEND**
- Certified Site Boundary
 - Mitigation Area
 - FPL Owned Property
 - Linear Facility Corridor
 - Transmission Interconnection Corridor
 - On-Site Gas Pipeline Alternatives
 - OCEC Unit 1
 - Open Space
 - UFA Well Delivery Pipeline
 - Future Solar Area

- Vegetation / Land Use
- 211 - Improved Pastures
- 212 - Unimproved Pastures
- 215 - Field Crops
- 221 - Citrus Groves
- 320 - Shrub And Brushland
- 321 - Palmetto Prairies
- 411 - Pine Flatwoods

- 420 - Upland Hardwood Forests
- 427 - Live Oak
- 434 - Hardwood-Coniferous Mixed
- 511 - Ditches
- 534 - Reservoirs Less Than 10 Acres (4 Hectares) Which Are Dominant Features

- 617 - Mixed Wetland Hardwoods
- 621 - Cypress
- 625 - Hydric Pine Flatwoods Mixed
- 630 - Wetland Forested Mixed
- 631 - Hydric Pine Flatwoods
- 641 - Freshwater Marshes
- 643 - Wet Prairies
- 740 - Disturbed Land

REFERENCE(S)
 PROPERTY, LINEAR FACILITY CORRIDOR, CERTIFIED SITE BOUNDARY, FUTURE SOLAR AREA, OPEN SPACE, MITIGATION AREA, FPL & GOLDER ASSOCIATES INC., 2015
 VEGETATION / LAND USE, SJRWMD & GOLDER ASSOCIATES INC., 2009-2015

CLIENT
FPL

PROJECT
OKEECHOBEE CLEAN ENERGY CENTER

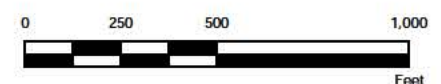
TITLE
VEGETATION / LAND USE (FLUCCS LEVEL II)



YYYY-MM-DD	2015-09-17
DESIGNED	NRL
PREPARED	GFD
REVIEWED	KAB
APPROVED	KFK



- LEGEND**
- Certified Site Boundary
 - Mitigation Area
 - FPL Owned Property
 - Linear Facility Corridor
 - Transmission Interconnection Corridor
 - On-Site Gas Pipeline Alternatives
 - OCEC Unit 1
 - Open Space
 - UFA Well Delivery Pipeline
 - Future Solar Area
 - Vegetation / Land Use
 - 211 - Improved Pastures
 - 212 - Unimproved Pastures
 - 221 - Citrus Groves
 - 321 - Palmetto Prairies
 - 411 - Pine Flatwoods
 - 427 - Live Oak
 - 434 - Hardwood-Coniferous Mixed
 - 511 - Ditches
 - 617 - Mixed Wetland Hardwoods
 - 641 - Freshwater Marshes



REFERENCE(S)
 PROPERTY, LINEAR FACILITY CORRIDOR, CERTIFIED SITE BOUNDARY, FUTURE SOLAR AREA, OPEN SPACE, MITIGATION AREA, FPL & GOLDER ASSOCIATES INC., 2015
 VEGETATION / LAND USE, SJRWMD & GOLDER ASSOCIATES INC., 2009-2015

CLIENT
 FPL

PROJECT
 OKEECHOBEE ENERGY CENTER

TITLE
 VEGETATION / LAND USE
 OCEC UNIT 1 AND OPEN SPACE
 (FLUCCS LEVEL III)



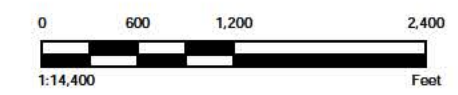
YYYY-MM-DD	2015-09-17
DESIGNED	NRL
PREPARED	NRL
REVIEWED	KAB
APPROVED	KFK

Source: Esri, DigitalGlobe, GeoEye, Earthstar Geographics, CNES/Airbus DS, USDA, USGS, AEX, Getmapping, Aerogrid, IGN, IGP, swisstopo, and the GIS User Community

IF THIS MEASUREMENT DOES NOT MATCH WHAT IS SHOWN, THE SHEET SIZE HAS BEEN MODIFIED FROM ANSII



- LEGEND**
- Certified Site Boundary
 - Mitigation Area
 - FPL Owned Property
 - Linear Facility Corridor
 - Transmission Interconnection Corridor
 - On-Site Gas Pipeline Alternatives
 - Future Solar Area
 - OCEC Unit 1
 - Open Space
 - UFA Well Delivery Pipeline
 - Vegetation / Land Use
- 211 - Improved Pastures
 - 212 - Unimproved Pastures
 - 215 - Field Crops
 - 221 - Citrus Groves
 - 320 - Shrub And Brushland
 - 321 - Palmetto Prairies
 - 411 - Pine Flatwoods
 - 427 - Live Oak
 - 434 - Hardwood-Coniferous Mixed
 - 511 - Ditches
 - 534 - Reservoirs Less Than 10 Acres (4 Hectares) Which Are Dominant Features
 - 617 - Mixed Wetland Hardwoods
 - 621 - Cypress
 - 630 - Wetland Forested Mixed
 - 641 - Freshwater Marshes
 - 643 - Wet Prairies
 - 740 - Disturbed Land



REFERENCE(S)
 PROPERTY, LINEAR FACILITY CORRIDOR, CERTIFIED SITE BOUNDARY, FUTURE SOLAR AREA, OPEN SPACE, MITIGATION AREA, FPL & GOLDER ASSOCIATES INC., 2015
 VEGETATION / LAND USE, SJRWMD & GOLDER ASSOCIATES INC., 2009-2015

CLIENT
 FPL

PROJECT
 OKEECHOBEE ENERGY CENTER

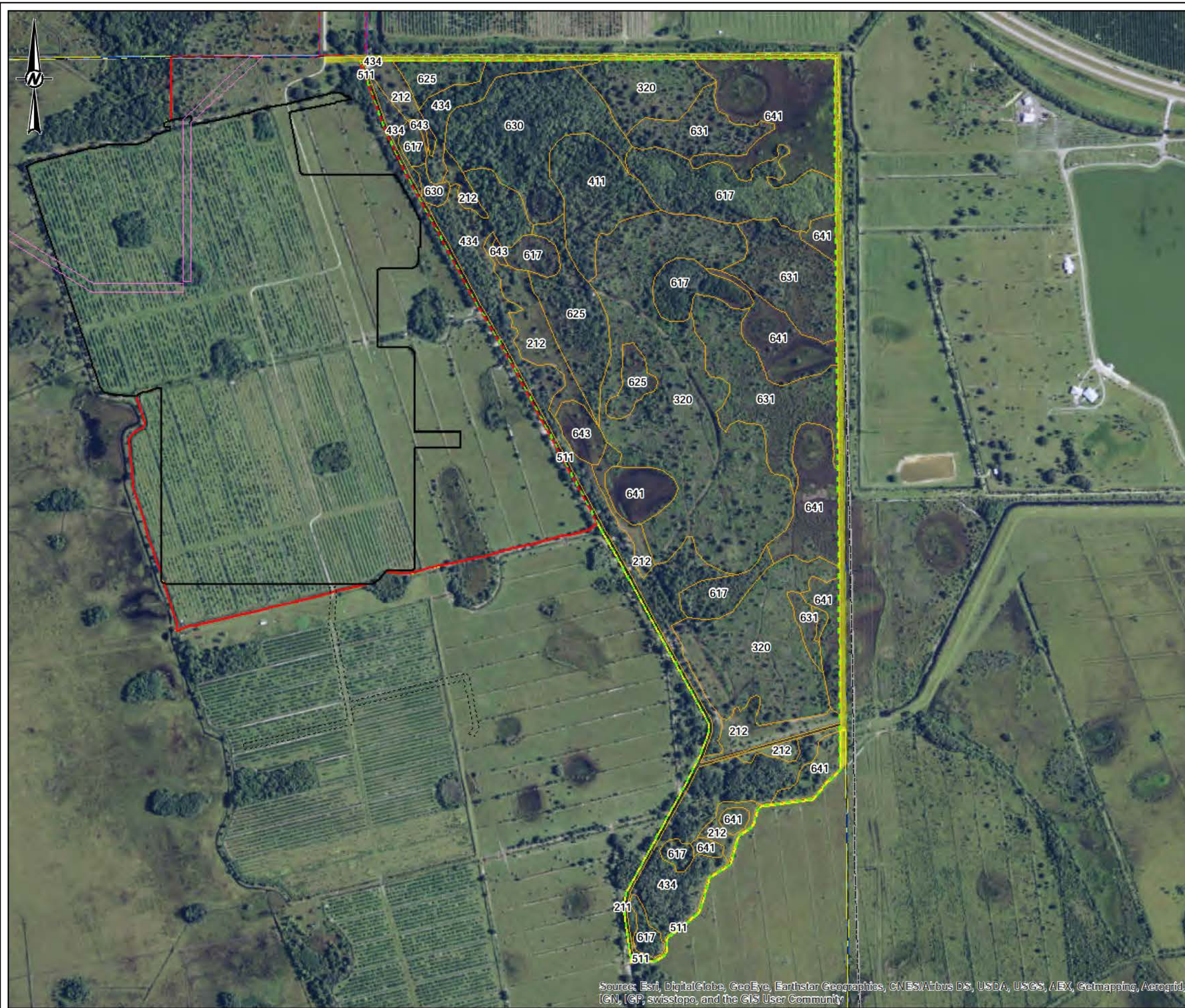
TITLE
 VEGETATION / LAND USE
 FUTURE SOLAR AREA
 (FLUCCS LEVEL III)

YYYY-MM-DD	2015-09-17
DESIGNED	NRL
PREPARED	NRL
REVIEWED	KAB
APPROVED	KFK

PROJECT NO. 1414979 CONTROL B036 REV. 0 FIGURE 3b

Source: Esri, DigitalGlobe, GeoEye, Earthstar Geographics, CNES/Airbus DS, USDA, USGS, AEX, Getmapping, Aerogrid, IGN, IGP, swisstopo, and the GIS User Community

IF THIS MEASUREMENT DOES NOT MATCH WHAT IS SHOWN, THE SHEET SIZE HAS BEEN MODIFIED FROM ANSII



LEGEND

- Certified Site Boundary
- Mitigation Area
- FPL Owned Property
- Linear Facility Corridor
- Transmission Interconnection Corridor
- On-Site Gas Pipeline Alternatives
- OCEC Unit 1
- Open Space
- UFA Well Delivery Pipeline
- Future Solar Area
- Vegetation / Land Use
 - 211 - Improved Pastures
 - 212 - Unimproved Pastures
 - 320 - Shrub And Brushland
 - 411 - Pine Flatwoods
 - 434 - Hardwood-Coniferous Mixed
 - 511 - Ditches
 - 617 - Mixed Wetland Hardwoods
 - 625 - Hydric Pine Flatwoods
 - 630 - Wetland Forested Mixed
 - 631 - Hydric Pine Flatwoods
 - 641 - Freshwater Marshes
 - 643 - Wet Prairies

0 412.5 825 1,650
Foot

REFERENCE(S)
PROPERTY, LINEAR FACILITY CORRIDOR, CERTIFIED SITE BOUNDARY, FUTURE SOLAR AREA, OPEN SPACE, MITIGATION AREA, FPL & GOLDER ASSOCIATES INC., 2015
VEGETATION / LAND USE, SJRWMD & GOLDER ASSOCIATES INC., 2009-2015

CLIENT
FPL

PROJECT
OKEECHOBEE ENERGY CENTER

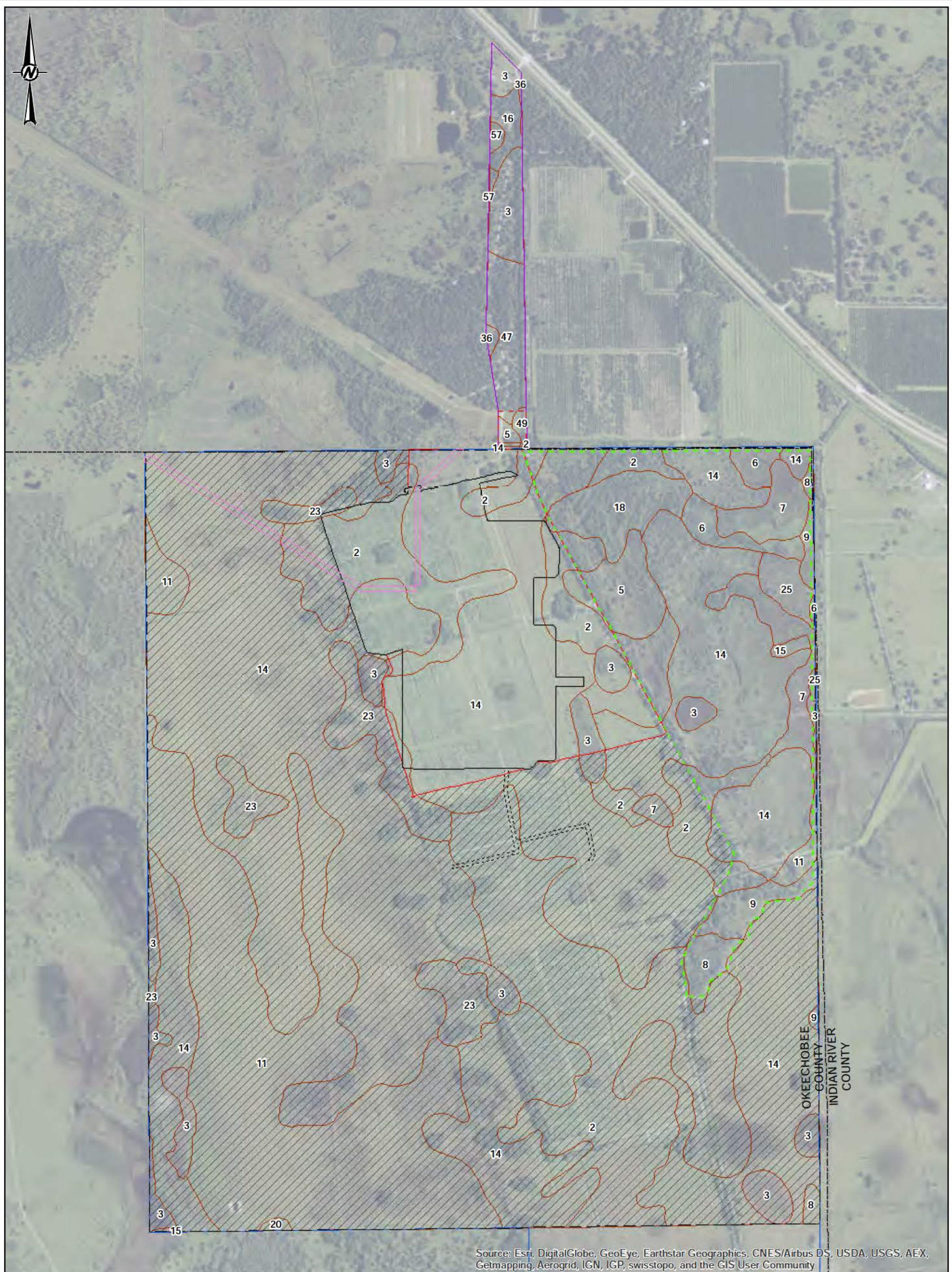
TITLE
VEGETATION / LAND USE
MITIGATION AREA
(FLUCCS LEVEL III)

YYYY-MM-DD	2015-09-17
DESIGNED	NRL
PREPARED	NRL
REVIEWED	KAB
APPROVED	KFK

PROJECT NO. 1414979 CONTROL B038 REV. 0 FIGURE 3c

Source: Esri, DigitalGlobe, GeoEye, Earthstar Geographics, CNES/Airbus DS, USDA, USGS, AEX, Getmapping, Aerogrid, IGN, IGP, swisstopo, and the GIS User Community

IF THIS MEASUREMENT DOES NOT MATCH WHAT IS SHOWN, THE SHEET SIZE HAS BEEN MODIFIED FROM ANSII



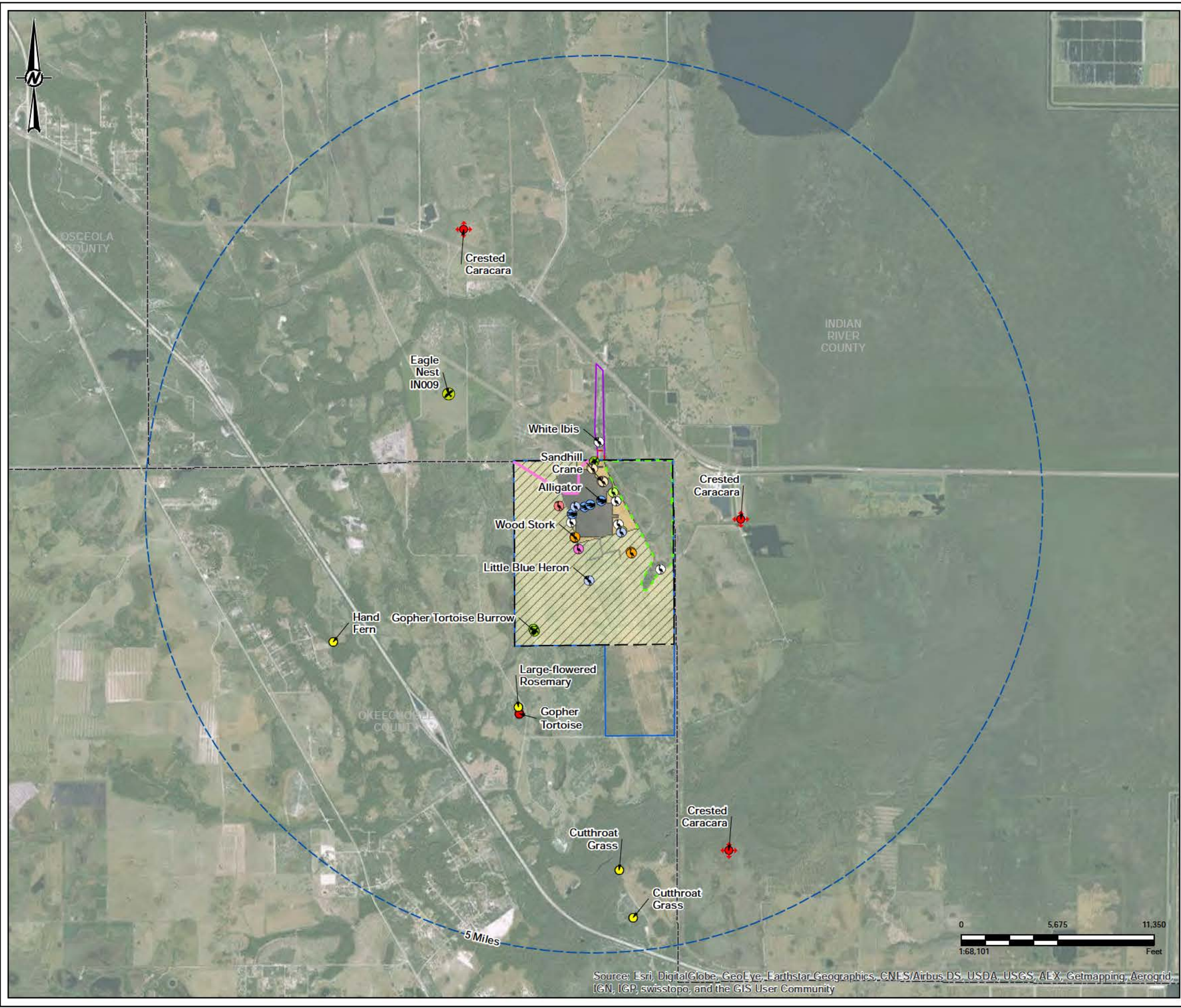
Source: Esri, DigitalGlobe, GeoEye, Earthstar Geographics, CNES/Airbus DS, USDA, USGS, AEX, Getmapping, Aerogrid, IGN, IGP, swisstopo, and the GIS User Community

LEGEND Certified Site Boundary Mitigation Area FPL Owned Property Linear Facility Corridor Transmission Interconnection Corridor On-Site Gas Pipeline Alternatives OCEC Unit 1 Open Space UFA Well Delivery Pipeline Future Solar Area		Soils 2 - Basinger Fine Sand 3 - Basinger and Placid Soils, Depressional 3 - Eau Gallie Fine Sand 5 - Myakka Fine Sand 5 - Valkaria Fine Sand 6 - Manatee Loamy Fine Sand, Depressional 7 - Floridana, Riviera, and Placid Soils, Depressional 8 - Pindeia Fine Sand 9 - Riviera Fine Sand 11 - Immokalee Fine Sand 14 - Myakka Fine Sand 15 - Okeelanta Muck 16 - Pineda Fine Sand 18 - Parkwood Fine Sand 20 - Pomello Fine Sand, 0 to 5 Percent Slopes 23 - St. Johns Fine Sand 25 - Wabasso Fine Sand 36 - Boca Fine Sand 47 - Holopaw Fine Sand 49 - Pompano Fine Sand 57 - Holopaw Fine Sand, Depressional	CLIENT FPL PROJECT OKEECHOBEE CLEAN ENERGY CENTER TITLE SOILS <table border="0"> <tr> <td>PROJECT NO.</td> <td>CONTROL</td> <td>REV.</td> <td>FIGURE</td> </tr> <tr> <td>1414979</td> <td>B041</td> <td>0</td> <td>4</td> </tr> </table>	PROJECT NO.	CONTROL	REV.	FIGURE	1414979	B041	0	4
PROJECT NO.	CONTROL	REV.	FIGURE								
1414979	B041	0	4								

REFERENCE(S)
 PROPERTY, LINEAR FACILITY CORRIDOR, CERTIFIED SITE BOUNDARY, FUTURE SOLAR AREA, OPEN SPACE, MITIGATION AREA, FPL & GOLDER ASSOCIATES INC., 2015
 SOILS, USDA/NRCS, 2012



IF THIS MEASUREMENT DOES NOT MATCH WHAT IS SHOWN, THE SHEET SIZE HAS BEEN MODIFIED FROM A4R18



LEGEND

- 5-Mile Radius
- Certified Site Boundary
- Mitigation Area
- FPL Owned Property
- Linear Facility Corridor
- Transmission Interconnection Corridor
- On-Site Gas Pipeline Alternatives
- OCEC Unit 1
- Open Space
- UFA Well Delivery Pipeline
- Future Solar Area
- FWC Eagle Nest
- Gopher Tortoise Burrow
- Alligator
- Crested Caracara
- Limpkin
- Little Blue Heron
- Sandhill Crane
- Tricolored Heron
- White Ibis
- Wood Stork

FNAI Element Occurrences

- Animals
- Plants
- Communities
- Other
- Data Sensitive
- ⊕ Point Indicates General Vicinity of Element

REFERENCE(S)
 PROPERTY, LINEAR FACILITY CORRIDOR, CERTIFIED SITE BOUNDARY, FUTURE SOLAR AREA, OPEN AREA, MITIGATION AREA, FPL & GOLDBER ASSOCIATES INC., 2015
 FACILITY LAYOUT, BLACK & VEATCH, 2015
 EAGLE NEST LOCATION, FWC, 2015
 GOPHER TORTOISE BURROW, GOLDBER ASSOCIATES INC., 2015
 FNAI ELEMENT OCCURRENCES, FNAI, 2007-2011

CLIENT
 FPL

PROJECT
 OKEECHOBEE CLEAN ENERGY CENTER

TITLE
 LISTED AND OBSERVED SPECIES OCCURRENCES WITHIN 5-MILES

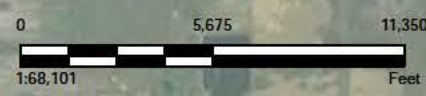
YYYY-MM-DD	2015-09-21
DESIGNED	NRL
PREPARED	NRL
REVIEWED	KAB
APPROVED	KFK

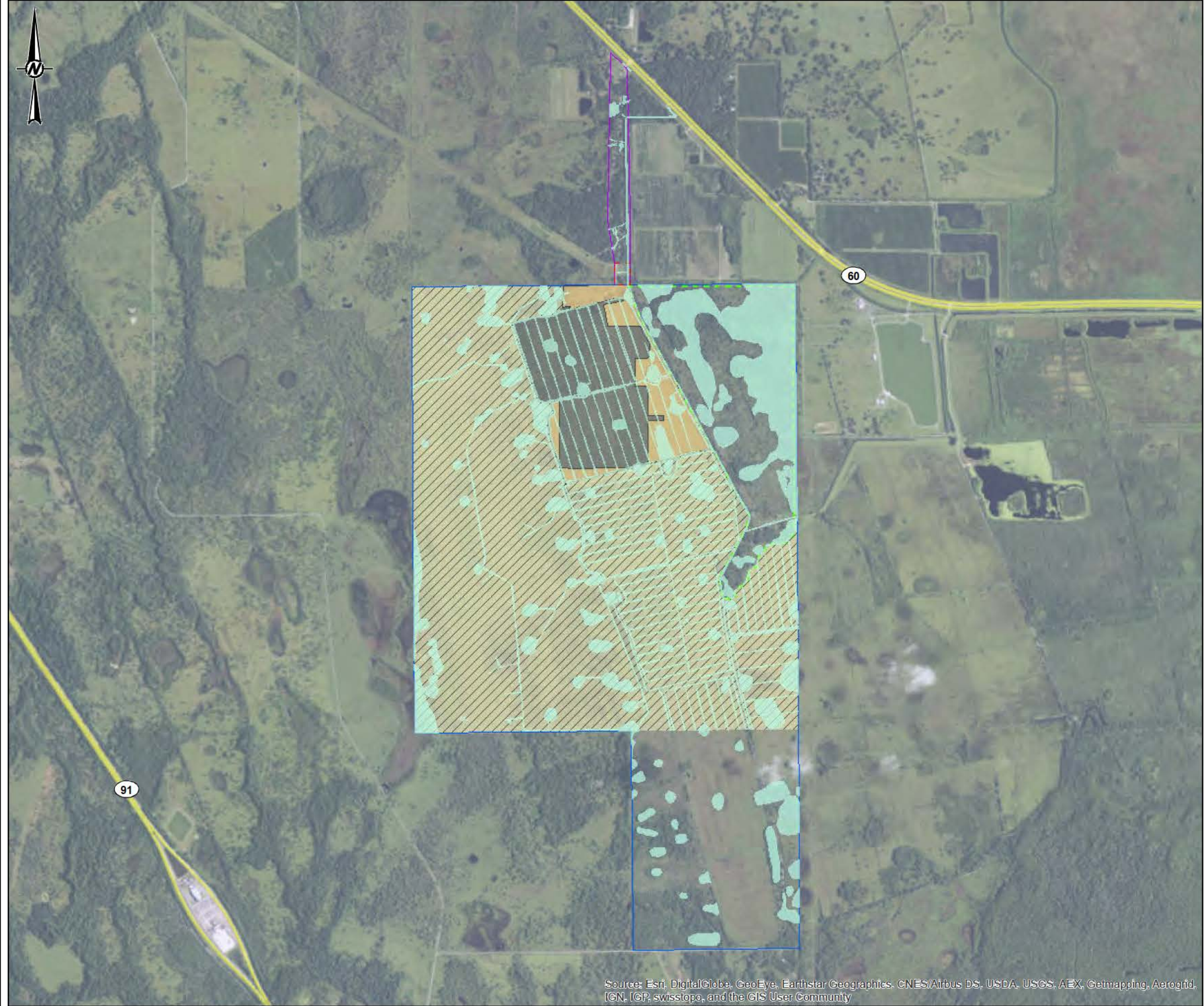
PROJECT NO. 1414979 CONTROL B069 REV. 0 FIGURE 5

G:\PROJECTS\FPL\Okeechobee\09_PROJECTS\FPL\Okeechobee\09_SCA_Project\02_PRODUCTION\001414979_B069_Trade_Species_EIR\Print

IF THIS MEASUREMENT DOES NOT MATCH WHAT IS SHOWN, THE SHEET SIZE HAS BEEN MODIFIED FROM ANSII

Source: Esri, DigitalGlobe, GeoEye, Earthstar Geographics, CNES/Airbus DS, USDA, USGS, AEX, Getmapping, Aerogrid, IGN, IGP, swisstopo, and the GIS User Community





- LEGEND
- ▬ Mitigation Area
 - FPL Owned Property
 - Linear Facility Corridor
 - Transmission Interconnection Corridor
 - OCEC Unit 1
 - Open Space
 - Future Solar Area
 - Wetlands



REFERENCE(S)
 COORD NATE SYSTEM: NAD 1983 STATEPLANE FLORIDA EAST FIPS 0901 FEET
 PROJECTION: TRANSVERSE MERCATOR
 DATUM: NORTH AMERICAN 1983

CLIENT
 FPL

PROJECT
 OKEECHOBEE SCA

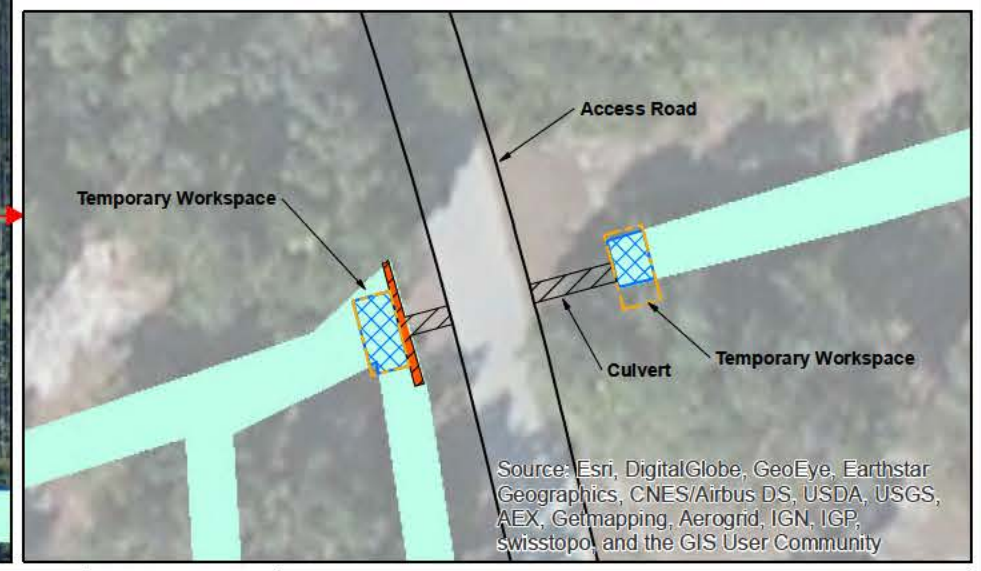
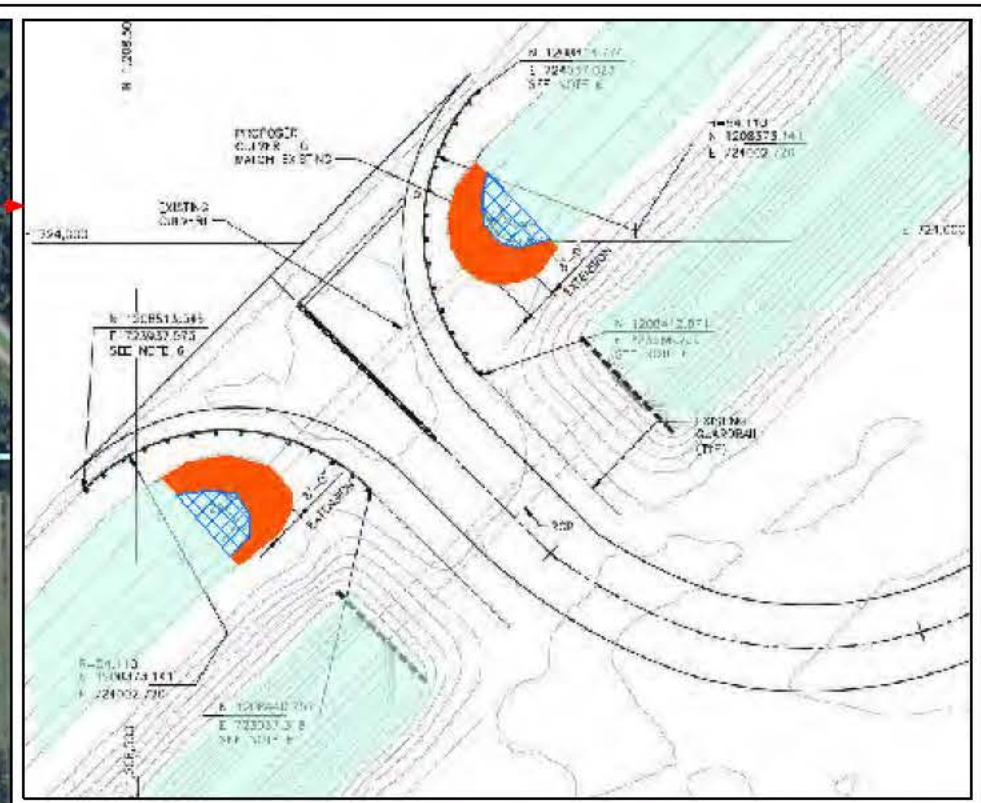
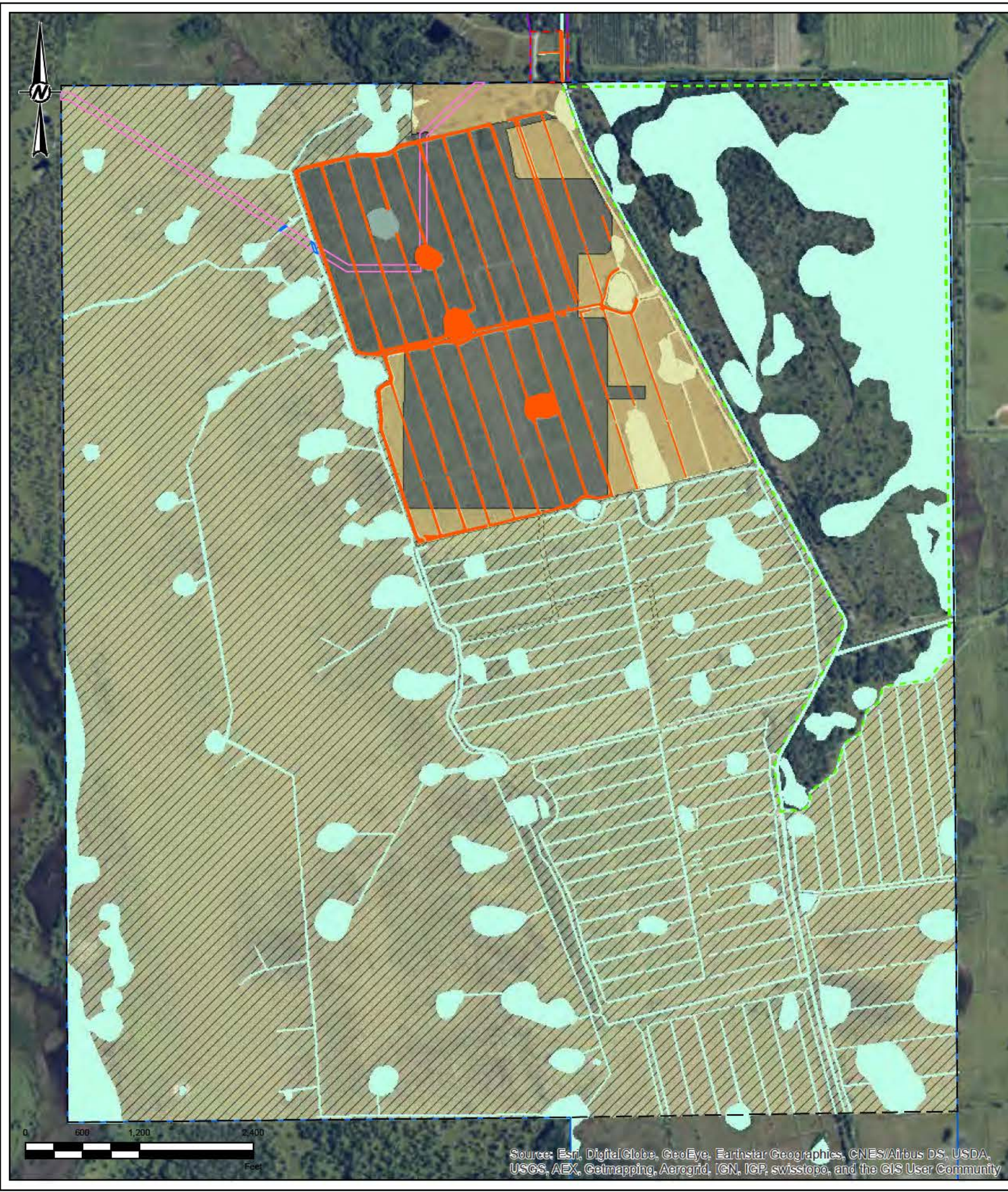
TITLE
WETLAND MAP



YYYY-MM-DD	2015-08-09
DESIGNED	NRL
PREPARED	NRL
REVIEWED	NRL
APPROVED	KAB

Source: Esri, DigitalGlobe, GeoEye, Earthstar Geographics, CNES/Airbus DS, USDA, USGS, AEX, Getmapping, Aerogrid, IGN, IGP, swisstopo, and the GIS User Community

IF THIS MEASUREMENT DOES NOT MATCH WHAT IS SHOWN, THE SHEET SIZE HAS BEEN MODIFIED FROM ANS B



- LEGEND**
- Facility Layout
 - ▭ Certified Site Boundary
 - ▭ Mitigation Area
 - ▭ FPL Owned Property
 - ▭ Linear Facility Corridor
 - ▭ Transmission Interconnection Corridor
 - ▭ OCEC Unit 1
 - ▭ Open Space
 - ▭ UFA Well Delivery Pipeline
 - ▭ On-Site Gas Pipeline Alternatives
 - ▭ Future Solar Area
 - Wetland Impacts**
 - ▭ Direct
 - ▭ Temporary

REFERENCE(S)
 COORD NATE SYSTEM: NAD 1983 STATEPLANE FLORIDA EAST FIPS 0901 FEET
 PROJECTION: TRANSVERSE MERCATOR
 DATUM: NORTH AMERICAN 1983

CLIENT
 FPL

PROJECT
 OKEECHOBEE CLEAN ENERGY CENTER

TITLE
WETLAND IMPACTS

WETLAND IMPACTS

FLUCFCS CODE	HABITAT DESCRIPTION	ACREAGE	
		Direct	Temporary
511	Ditches	19.99	0.11
617	Mixed Wetland Hardwoods	4.71	
GRAND TOTAL		24.70	0.11

YYYY-MM-DD	2015-09-17
DESIGNED	JW
PREPARED	NRL
REVIEWED	KAB
APPROVED	KAB

PROJECT NO. 1414979 CONTROL B057 REV. 0 FIGURE 7

G:\PROJECTS\FLO\Okeechobee\09_PROJECTS\FLO\Okeechobee\09_SCA_Polys\02_PRODUCTION\01\1414979_B057_WetlandImpacts_EBP.mxd

IF THIS SUBMITTAL DOES NOT MATCH WHAT IS SHOWN, THE SHEET SIZE HAS BEEN MODIFIED FROM ANSI B

BOUNDARY SURVEY ONLY

SECTIONS 1, 2, 11 AND 12, TOWNSHIP 33 SOUTH, RANGE 35 EAST
OKEECHOBEE COUNTY, FLORIDA

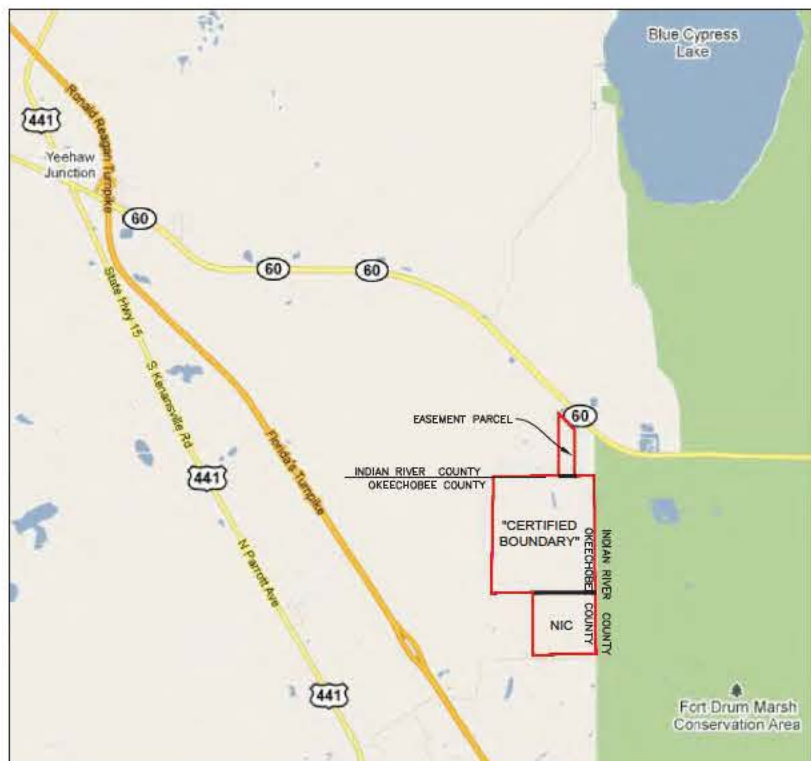
LEGAL DESCRIPTION - "CERTIFIED BOUNDARY"

ALL OF SECTIONS 1, 2, 11 AND 12, TOWNSHIP 33 SOUTH, RANGE 35 EAST, OKEECHOBEE COUNTY, FLORIDA BEING MORE PARTICULARLY DESCRIBED AS FOLLOWS:

BEGINNING AT THE NORTHEAST CORNER OF SAID SECTION 2 AND THE NORTHWEST CORNER OF SAID SECTION 1, TOWNSHIP 33 SOUTH, RANGE 35 EAST, OKEECHOBEE COUNTY, FLORIDA, ALSO BEING THE SOUTHWEST CORNER OF SECTION 35, AND THE SOUTHWEST CORNER OF SECTION 36, TOWNSHIP 32 SOUTH, RANGE 35 EAST, INDIAN RIVER COUNTY, FLORIDA, BEING MARKED BY A 4"x4" CONCRETE MONUMENT WITH ALUMINUM DISC STAMPED "CARTER ASSOC. LB 205 PRM", RUN NORTH 89°34'00" EAST ALONG THE NORTH LINE OF SAID SECTION 1, SAID NORTH LINE OF SECTION 1 BEING THE COUNTY LINE BETWEEN INDIAN RIVER COUNTY AND OKEECHOBEE COUNTY AND THE COMMON TOWNSHIP LINE OF TOWNSHIP 33 SOUTH AND TOWNSHIP 32 SOUTH, A DISTANCE OF 4,010.02 FEET TO THE NORTHEAST CORNER OF SAID SECTION 1 BEING MARKED BY A 4"x4" CONCRETE MONUMENT WITH ALUMINUM DISC STAMPED "CARTER ASSOC. LB 205 PRM"; THENCE RUN SOUTH 00°34'34" EAST, ALONG THE EAST LINE OF SAID SECTION 1 AND COMMON RANGE LINE OF RANGE 35 EAST AND RANGE 36 EAST, A DISTANCE OF 3,757.35 FEET TO THE NORTHWEST CORNER OF SECTION 7, TOWNSHIP 33 SOUTH, RANGE 36 EAST, BEING MARKED BY A 4"x4" CONCRETE MONUMENT WITH ALUMINUM DISC STAMPED "CARTER ASSOC. LB 205 PRM"; THENCE CONTINUE ON SAID COMMON RANGE LINE, SOUTH 00°24'50" EAST, A DISTANCE OF 1,700.34 FEET TO THE SOUTHWEST CORNER OF SAID SECTION 1, ALSO BEING THE NORTHEAST CORNER OF SAID SECTION 12, TOWNSHIP 33 SOUTH, RANGE 35 EAST, BEING MARKED BY A 4"x4" CONCRETE MONUMENT WITH ALUMINUM DISC STAMPED "CARTER ASSOC. LB 205 PRM"; THENCE CONTINUE ALONG SAID COMMON RANGE LINE, SOUTH 00°34'59" EAST, A DISTANCE OF 358.01 FEET TO THE NORTHWEST CORNER OF SECTION 18, TOWNSHIP 33 SOUTH, RANGE 35 EAST, BEING MARKED BY A 4"x4" CONCRETE MONUMENT WITH ALUMINUM DISC STAMPED "CARTER ASSOC. LB 205 PRM"; THENCE CONTINUE ALONG SAID COMMON RANGE LINE, SOUTH 00°25'09" EAST, A DISTANCE OF 1,773.48 FEET TO THE SOUTHWEST CORNER OF SAID SECTION 12, ALSO BEING THE SOUTHWEST CORNER OF SECTION 13, TOWNSHIP 33 SOUTH, RANGE 35 EAST BEING MARKED BY A 4"x4" CONCRETE MONUMENT WITH ALUMINUM DISC STAMPED "CARTER ASSOC. LB 205 PRM"; THENCE LEAVING SAID COMMON RANGE LINE, RUN SOUTH 89°07'19" WEST ALONG THE SOUTH LINE OF SAID SECTION 12, A DISTANCE OF 4,076.74 FEET TO THE SOUTHWEST CORNER OF SAID SECTION 12, ALSO BEING THE SOUTHWEST CORNER OF SECTION 11, TOWNSHIP 33 SOUTH, RANGE 35 EAST AND THE NORTHWEST CORNER OF SECTION 13, TOWNSHIP 33 SOUTH, RANGE 35 EAST, BEING MARKED BY A 4"x4" CONCRETE MONUMENT WITH CAP STAMPED "W.M.J. JOHNSTON RLB 935 C.E. 4379"; THENCE RUN SOUTH 89°25'02" WEST ALONG THE SOUTH LINE OF SAID SECTION 11, A DISTANCE OF 5,290.43 FEET TO THE SOUTHWEST CORNER OF SECTION 11, TOWNSHIP 33 SOUTH, RANGE 35 EAST, BEING MARKED BY A 4"x4" CONCRETE MONUMENT WITH ALUMINUM DISC STAMPED "CARTER ASSOC. LB 205 PRM"; THENCE RUN NORTH 00°22'54" WEST ALONG THE WEST LINE OF SAID SECTION 11, A DISTANCE OF 5,357.49 FEET TO THE NORTHWEST CORNER OF SECTION 11, TOWNSHIP 33 SOUTH, RANGE 35 EAST, ALSO BEING THE SOUTHWEST CORNER OF AFORESAID SECTION 2, TOWNSHIP 33 SOUTH, RANGE 35 EAST, BEING MARKED BY A 4"x4" CONCRETE MONUMENT WITH CAP STAMPED "W.M.J. JOHNSTON RLB 935 C.E. 4379"; THENCE RUN NORTH 00°22'52" WEST ALONG THE WEST LINE OF SAID SECTION 2, A DISTANCE OF 5,551.10 FEET TO THE NORTHWEST CORNER OF SAID SECTION 2, TOWNSHIP 33 SOUTH, RANGE 35 EAST, ALSO BEING THE SOUTHWEST CORNER OF SECTION 35, TOWNSHIP 32 SOUTH, RANGE 35 EAST, BEING MARKED BY A 4"x4" CONCRETE MONUMENT WITH ALUMINUM DISC STAMPED "CARTER ASSOC. LB 205 PRM"; THENCE RUN NORTH 89°34'00" EAST ALONG THE NORTH LINE OF SAID SECTION 2, ALSO BEING THE AFORESAID HAZYRD LINE AND TOWNSHIP LINE, A DISTANCE OF 5,339.95 FEET TO THE POINT OF BEGINNING.

THE ABOVE DESCRIBED PARCEL LYING AND BEING IN OKEECHOBEE COUNTY, FLORIDA, CONTAINING 2,340.88 ACRES, MORE OR LESS.

SUBJECT TO ALL EASEMENTS, RESERVATIONS, RESTRICTIONS AND RIGHTS OF WAY OF RECORD.



LOCATION MAP
NOT TO SCALE

REFERENCES:

- SKETCH OF INFORMATION ONLY BY CARTER ASSOCIATES, INC. PROJECT No. 90-7535, DATED 11-7-1990, FIELD BOOK 439, PAGE 62, DRAWING No. 13503-C.
- PLAN TITLED "ALTA/ASCN LAND TITLE SURVEY SECTIONS 1, 2, 11, 12 AND 13 TOWNSHIP 33 SOUTH, RANGE 35 EAST OKEECHOBEE COUNTY, FLORIDA, PREPARED BY CARTER ASSOCIATES, INC. PROJECT NUMBER 11-2795, DRAWING NUMBER 19082-C, FIELD BOOK 660, PAGE 48-F AND 783 PAGE 1, DATED MAY 2011 WITH LATEST REVISION JUNE 29, 2011.
- PLAN TITLED "BOUNDARY, TOPOGRAPHIC AND TREE LOCATION SURVEY, PREPARED BY CARTER ASSOCIATES, INC. PROJECT NUMBER 05-7485, DRAWING NUMBER 18106 C, FIELD BOOK 693, PAGE 7-4, DATED FEBRUARY 6, 2006, LATEST REVISION AUGUST 5, 2008.
- INDIAN RIVER COUNTY TAX ASSESSORS MAPS
- FLORIDA DEPARTMENT OF TRANSPORTATION RIGHT-OF-WAY MAPS FOR STATE ROAD 60.
- SECTION 88060-2529, AS APPROVED 9-24-97.
- BOUNDARY SURVEY PREPARED BY JOHNSTON SURVEYING
- SPECIFIC PURPOSE SURVEY BY CARTER ASSOCIATES, INC., PROJ. #638-91, DATED 04/93.
- BOUNDARY SURVEY BY CARTER ASSOCIATES, INC., PROJ. #02-5075, DWG. #16656-C, DATED 05/04/99.
- BOUNDARY SURVEY BY CARTER ASSOCIATES, INC., PROJ. #98-3265, DWG. #15441-C, DATED 04/01/99.
- BOUNDARY SURVEY BY CARTER ASSOCIATES, INC., PROJ. #98-468, DWG. #15267-C, DATED 08/18/98.
- BOUNDARY SURVEY BY CARTER ASSOCIATES, INC., DWG. #9011-C1, DATED 03/02/83.
- SURVEY BY CARTER ASSOCIATES, INC., FOR "VARA", DWG. #12060-C, DATED 12/30/87.
- BOUNDARY SURVEY BY LLOYD & ASSOCIATES FOR "MANNARINO, JOB #85-288, DATED 06/20/88.

VERIFY SCALE OF DRAWINGS. THE BAR SCALE ON EACH DRAWING IS ONE INCH ON ORIGINAL DRAWINGS, IF NOT ONE INCH ON EACH SHEET OF THIS SET, ADJUST SCALES ACCORDINGLY.

SURVEYOR'S GENERAL NOTES AND REPORT:

- UNLESS IT BEARS THE SIGNATURE AND THE ORIGINAL RAISED SEAL OF A FLORIDA LICENSED SURVEYOR AND MAPPER, THIS DRAWING, SKETCH, PLAT OR MAP IS FOR INFORMATIONAL PURPOSES ONLY AND IS NOT VALID.
- THE LAST DAY OF FIELD WORK PERFORMED FOR THE INITIAL SURVEY EFFORT WAS MARCH 27, 2015. SUBSEQUENT ADDITIONS, DELETIONS AND/OR UPDATES, IF ANY, ARE REFLECTED IN THE DRAWING REVISIONS.
- UNLESS A DIFFERENCE IS SHOWN, OBSERVED AND RECORD DIMENSIONS ARE THE SAME. ALL DIMENSIONS SHOWN HEREON ARE DISPLAYED IN U.S. SURVEY FEET AND DECIMAL PARTS THEREOF.
- HORIZONTAL COORDINATE VALUES AND THE BEARINGS SHOWN HEREON ARE BASED UPON THE NORTH AMERICAN DATUM OF 1983, ADJUSTMENT OF 1999 (NAD 83/2007), AND PROJECTED IN THE STATE PLANE COORDINATE SYSTEM, FLORIDA EAST ZONE (901). DIMENSIONS SHOWN HEREON ARE DISPLAYED IN U.S. SURVEY FEET.
- THE BOUNDARY DETERMINATION AND DELINEATION SHOWN ON THIS MAP OF SURVEY WAS BASED UPON THE PROFESSIONAL OPINION OF THE REGISTERED SURVEYOR PURSUANT TO NORMAL PRINCIPALS AND PRACTICES OF LAND SURVEYING AND IS NOT INTENDED TO IMPLY OR DETERMINE OWNERSHIP. THIS SURVEY DOES NOT INTEND TO DELINEATE LOCAL AREAS OF CONCERN OR ANY OTHER JURISDICTIONAL DETERMINATION.
- THIS SURVEY HAS BEEN PREPARED FOR THE EXCLUSIVE BENEFIT AND USE OF THE PERSONS AND/OR ENTITIES NAMED HERON FOR THE PURPOSES IDENTIFIED HEREON ONLY. UNLESS OTHERWISE STATED, CERTIFICATION OF THIS SURVEY MAP APPLIES ONLY TO THE MINIMUM TECHNICAL STANDARDS SET FORTH BY THE FLORIDA BOARD OF PROFESSIONAL SURVEYORS AND MAPPERS IN CHAPTER 5417 FLORIDA ADMINISTRATIVE CODE, PURSUANT TO SECTION 472.027, FLORIDA STATUTES. THE CERTIFICATION IN NO WAY CONSTITUTES NEITHER GUARANTY NOR WARRANTY TO ANY OTHER INFORMATION NOT SHOWN HEREON. ADDITIONS, DELETIONS OR REVISIONS TO THIS DRAWING BY OTHERS ARE NOT PERMITTED AND THIS SURVEY MAY NOT BE TRANSFERRED WITHOUT THE EXPRESSED WRITTEN PERMISSION OF THE SIGNING SURVEYOR. THIS SURVEY IS NOT VALID FOR ANY OTHER PURPOSE OTHER THAN INTENDED BY THE SIGNING SURVEYOR.
- THIS PROPERTY APPEARS TO LIE WITHIN FLOOD ZONES "C", AREAS OF MINIMAL FLOODING, AND ZONE "A", AREAS OF 100 YEAR FLOOD, BASE FLOOD ELEVATIONS AND FLOOD HAZARD FACTORS NOT DETERMINED ACCORDING TO THE FLOOD INSURANCE RATE MAP PANEL NO. 1201770075 B, DATED: FEBRUARY 4, 1981.
- THE LEGAL DESCRIPTION AND MATTERS OF PUBLIC RECORD WERE FURNISHED BY THE CLIENT. THIS PROPERTY(S) WAS NOT ABSTRACTED OR RESEARCHED BY THIS OFFICE FOR ENCUMBRANCES OF RECORD. THE HEREON DESCRIBED PROPERTY IS SUBJECT TO RESTRICTIONS, RESERVATIONS, EASEMENTS AND RIGHTS-OF-WAY OF RECORD, IF ANY. MATTERS OF RECORD NOT BROUGHT TO THE SURVEYOR'S ATTENTION BY THE CLIENT; THEIR AGENT OR AS DISCLOSED BY A FURNISHED TITLE INSURANCE POLICY WERE NOT INCLUDED. NO INVESTIGATION WAS MADE BY THIS OFFICE INTO THE VALIDITY OF ANY EASEMENTS CITED IN THE LEGAL DESCRIPTION OR FOR ANY ENCUMBRANCES NOT OF RECORD IN THE INFORMATION FURNISHED BY THE CLIENT. A TITLE REPORT OR COMMITMENT WAS NOT FURNISHED FOR THIS SURVEY.
- WITH EXCEPTION TO WHAT HAS BEEN FIELD LOCATED AND SHOWN ON THIS SURVEY, THE SURVEYOR MAKES NO GUARANTEES THAT THE UNDERGROUND UTILITIES SHOWN HEREON COMPRISE ALL SUCH UTILITIES IN THE AREA, EITHER IN SERVICE OR ABANDONED. SUBSURFACE AND/OR AERIAL ENCROACHMENTS, IF ANY, WERE NOT LOCATED AND/OR DEPICTED ON THIS SURVEY UNLESS NOTED OR IDENTIFIED.
- NO FOUNDATIONS OR UNDERGROUND INSTALLATIONS HAVE BEEN FIELD LOCATED PER THIS SURVEY, UNLESS OTHERWISE NOTED.
- THIS SURVEY CONSISTS OF TWO (2) SHEETS AND SHALL NOT BE CONSIDERED COMPLETE AND/OR VALID UNLESS ALL SHEETS ARE PRESENT.

VERTICAL DATUM AND CONTROL NOTES:

THE ELEVATIONS SHOWN HEREON ARE REFERENCED TO THE NORTH AMERICAN VERTICAL DATUM OF 1988 (NAVD 1988) AND ARE DISPLAYED IN U.S. SURVEY FEET AND DECIMAL PARTS THEREOF.

ORIGINATING NGS BENCHMARK (PUBLISHED):

DESIGNATION: Q 62 RESET
PID: AF6414
STATE/COUNTY: FL/INDIAN RIVER
USGS QUAD: FORT DRUM NE (1972)
NAD 83 (1986) POSITION: 27 39 30. (N) 080 47 27. (W)
NAVD 88 ORTHO HEIGHT 9.698 (METERS) 31.82 (FEET)
DESCRIPTION: BENCH MARK DISK SET IN TOP OF CONCRETE MONUMENT, STAMPED Q 62 RESET 1959 LOCATED AT ENTRANCE TO G. KAHLER PROPERTY. (BENCH MARK DESTROYED DURING STATE ROAD 60 CONSTRUCTION)
ELEVATION: 31.82 NAVD 1988, 33.13 NGVD 1929

SURVEYOR'S GLOBAL POSITIONING SYSTEM (G.P.S.) NOTES:

- G.P.S. SURVEY METHOD: REAL TIME KINEMATIC (RTK)
- G.P.S. RECEIVER TYPE: DUAL FREQUENCY LBCA GX 1250 AND LEICA GS 14 GPS/GLOMASS GNSS (GLOBAL NAVIGATION SATELLITE SYSTEM), SBAS, CODE AND PHASE (L1 AND L2)
- THE ORIGINAL GPS RTK MEASUREMENTS BEGAN MARCH 26, 2015 AND WERE COMPLETED ON MARCH 27, 2015. TWO LEICA DUAL FREQUENCY GPS RECEIVERS EQUIPPED WITH RT-SKI (REAL TIME MEASUREMENT CAPABILITIES) WERE USED TO GATHER GPS DATA. TYPICALLY A BASE RECEIVER IS SET UP ON AN ESTABLISHED CONTROL STATION WHILE A ROVING RECEIVER LOCATES EXISTING MONUMENTS, IMPROVEMENTS AND/OR TOPOGRAPHIC DATA AND CONTROL THROUGHOUT THE PROJECT AREA. REAL-TIME COORDINATE COMPUTATIONS AND PRECISION INFORMATION ARE DETERMINED VIA RADIO / MOBILE LINK WITH THE BASE STATION AND RECORDED AS THREE DIMENSIONAL (3D) POSITIONS.
- G.P.S. SURVEY MEASUREMENTS WERE PROCESSED AND ADJUSTED USING LEICA GED OFFICE, VERSION 8.3
- THE HORIZONTAL TARGET ACCURACY FOR THIS SURVEY IS AS FOLLOWS:
HORIZONTAL: 10MM + 1PPM (RMS)
VERTICAL: 20MM + 1PPM (RMS).

HORIZONTAL AND VERTICAL CONTROL POINTS (NAD83/1999):

- MAYX 1
N 1199946.1780
E 724318.7710
EL. 31.31 NAVD 1988
1/2" DIA. REBAR/CAP STAMPED TRAV. PT. LB 205-
- MAYX 2
N 1205654.0590
E 723514.3170
EL. 30.29 NAVD 1988
1/2" DIA. REBAR/CAP STAMPED TRAV. PT. LB 205-
- MAYX 3
N 1186834.4772
E 722294.7311
EL. 32.01 NAVD 1988
1/2" DIA. REBAR/CAP STAMPED TRAV. PT. LB 205-
- MAYX 4
N 1186827.3756
E 724110.7418
EL. 42.28 NAVD 1988
1/2" DIA. REBAR/CAP STAMPED TRAV. PT. LB 205-
- AERIAL TARGET CONTROL POINTS:
- AERIAL TARGET #1 SET REBAR/CAP STAMPED TRAV. PT. LB 205-
N 1203141.130 E 718674.780
ELEVATION 44.06 NAVD 1988
- AERIAL TARGET #2 SET REBAR/CAP STAMPED TRAV. PT. LB 205-
N 1192138.280 E 719170.930
ELEVATION 52.93 NAVD 1988
- AERIAL TARGET #3 SET REBAR/CAP STAMPED TRAV. PT. LB 205-
N 1186780.600 E 724090.370
ELEVATION 43.48 NAVD 1988
- AERIAL TARGET #4 SET REBAR/CAP STAMPED TRAV. PT. LB 205-
N 1186857.010 E 728149.050
ELEVATION 31.10 NAVD 1988
- AERIAL TARGET #5 SET REBAR/CAP STAMPED TRAV. PT. LB 205-
N 1202877.890 E 729954.290
ELEVATION 29.84 NAVD 1988
- AERIAL TARGET #6 SET REBAR/CAP STAMPED TRAV. PT. LB 205-
N 1209366.980 E 723026.280
ELEVATION 30.27 NAVD 1988

LEGEND

	CONTROL		OVERHEAD UTILITY
	TARGET NUMBER		EXISTING MAJOR CONTOUR
	NORTHING		EXISTING MINOR CONTOUR
	EASTING		EXISTING DEPRESSION CONTOUR
	ELEVATION		
	UTILITY POLE		RCP REINFORCED CONCRETE PIPE
	SIGN		ADS ADVANCED DRAINAGE SYSTEM PIPE (HDPE)
	POST		HDPE HIGH DENSITY POLYETHYLENE PIPE
	CULVERT		CAP CORRUGATED ALUMINUM PIPE
	EXISTING WELL		FF EL FINISH FLOOR ELEVATION
	PAVED ROAD		INV INVERT
	CONCRETE SURFACE		CMP CORRUGATED METAL PIPE
	UNPAVED ROAD		NGVD 1929 NATIONAL GEODETIC VERTICAL DATUM 1929
	BARBED WIRE FENCE		NAVD 1988 NORTH AMERICAN VERTICAL DATUM 1988
	WOOD FENCE		NIC NOT INCLUDED
	GAME FENCE		
	GUARDRAIL		
	STRUCTURE		
	TREE/LANDSCAPE LINE		
	EDGE OF WATER		
	SECTION LINE		

NAVD 1988

ALL ELEVATIONS DEPICTED HEREON REFERENCE NAVD 1988. THE CONVERSION FACTOR TO NGVD 1929 IS +1.31'

NO.	REVISION	BY	DATE
1	REVISED "CERTIFIED BOUNDARY" LIMITS	DEL	04/03/15

FLORIDA POWER AND LIGHT COMPANY
700 UNIVERSE BOULEVARD
JUNO BEACH, FLORIDA 33408-0420
TEL: (561) 304-5878 FAX:

CARTER ASSOCIATES, INC.
CONSULTING ENGINEERS AND LAND SURVEYORS
1708 21st STREET, VERO BEACH, FL 32960
TEL: (772) 562-4191 FAX: (772) 562-7180

CERTIFICATION
FLORIDA POWER AND LIGHT COMPANY

FRANK S. CUCCURESE
FLORIDA LICENSE NO. 4765
CARTER ASSOCIATES, INC. COA 205 / LB 205

DATE : APRIL 2015
PROJ # : 14-57752
DRAWN BY: DJM
APPD BY: DEL/fsc
PLOT BY: David Luetjhe
FILE NAME: 14-57752.dwg
REF # : 17474C
F.B. & P.G. : 600/48+ / 703/1

BOUNDARY SURVEY ONLY
SECTIONS 1, 2, 11 AND 12
TOWNSHIP 33 SOUTH, RANGE 35 EAST
OKEECHOBEE COUNTY, FLORIDA

SHEET
1 of 2
Dwg. #: 19869 C1

NO.	REVISION	BY	DATE

FLORIDA POWER AND LIGHT COMPANY
 700 UNIVERSE BOULEVARD
 JUNO BEACH, FLORIDA 33408-0420
 TEL: (801) 304-6978
 FAX:

CARTER ASSOCIATES, INC.
 CONSULTING ENGINEERS AND LAND SURVEYORS
 1708 21ST STREET, VERO BEACH, FL 32960
 TEL: (772) 562-4191
 FAX: (772) 562-7180

THIS SURVEY CONSISTS OF 2 SHEETS.
 ONE IS NOT VALID WITHOUT THE OTHER(S).

DATE: APRIL 2015
 DRAWN BY: DEL
 APPROVED BY: DEL
 PLOT BY: David Luedtke
 FILE NAME: 1457752.dwg
 REF # : 1747C
 F.B. & PG. : 660484-76371

BOUNDARY SURVEY ONLY
 SECTIONS 1, 2, 11 AND 12
 TOWNSHIP 33 SOUTH, RANGE 35 EAST
 OKEECHOBEE COUNTY, FLORIDA

SHEET
 2 of 2

